

Ink Jet Printer Series

Versatile • Precise • Compact

Versatile

Whether you want to print fixed information such as the product name or SKU, variable information like time, sequential numbering, a Best Before or Expiration Date, the software supplied with the *TTP* gives you the versatility to do it.

Precise Print Registration

Software in the *TTP* allows you to correctly position the imprint on the leading edge of the twist tie, or if you prefer, you can continuously repeat the message over the length of the tie.



The *TTP* is supplied with an encoder built into the printhead carrier. The encoder tracks the exact speed of the twist tie and relays that information back to the printer so that the code is perfect.

Printhead Reliability

The printhead and ink supply have been combined into a one piece unit to provide reliable operation and trouble free maintenance. Once the ink has been depleted, or if you wish to change colors, simply turn the knurled retaining rod, remove the printhead and insert a new one.



TTP Twist Tie controller, printhead, and printhead carrier



Compact

The compact size of the *TTP Printer* makes it an easy addition to your existing twist tie machine.

Complete System

The *TTP Printer* is sold complete and ready to be installed. This means that everything you need to mount the printer and run production is supplied as a complete package.

A "Quick Start" card is also included to help you through the message entry routine once you are ready to run.

Font Selection

The *TTP Small Character Ink Jet Printer* offers 3 distinct character heights to choose from.

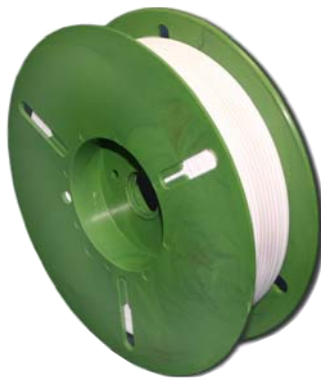
SIZE	DOT MATRIX PATTERN
.052" (1.32mm)	5 x 5
.073" (1.85mm)	7 x 5
.073" (1.85mm)	7 x 5 BOLD (AF1)
.125" (3.2mm)	12 x 9
.125" (3.2mm)	12 x 9 BOLD

When printing in the 12 x 5 font, the *TTP* also has the capability to print two lines of 5 x 5 text in the same message. The 7 x 5 fonts are capable of printing a single line of text.

Technical Specifications

Twist Tie Material

Plas-Ties offers superior twist tie material best-suited for printing. The inks that the *TTP* printer uses are meant for porous surfaces. Plas-Ties' paper/plastic or paper/paper configurations are required for best results with the *TTP* printer .



Standard Features

- 32 character message length
- Message storage: 25 messages up to 32 characters each
- Programmable print registration
- Variable character spacing and width
- Sequential numbering up to 32 digits
- Production counting
- Variable date formats
- Military time numbering
- Shift coding
- Auto repeat
- Expiry Date offset
- Full alpha/numeric character set
- English, Spanish language prompts

Environmental

- 40°F – 104°F (5°C – 40°C)
- Up to 90% RH non-condensing

Production Speed

- Up to 200 FPM (60 m/min)

Power Required

- Selectable 110 – 250 VAC, 47 – 63 Hz, 0.7A

Ink Supply

Built into the printhead and will enable the user to print the following approximate number of characters, depending on font size:

DOT MATRIX	CHARACTERS	MESSAGES/CARTRIDGE*
5 x 5	8,000,000	1,000,000
12 x 5	3,500,000	437,500
12 x 5 BOLD	1,800,000	225,000

* Based on a typical 8 digit message.

Ink Type

Water based

Black, Blue, Red, Green 4052 series
Supplied in a 4 pack carton.



Twist-tie marking with the *TTP* Printer.



Dimensional Data

TTP Controller

4.125" wide x 1.5" deep x 8.75" long

TTP Printhead Module

2" wide x 1.75" deep x 3.75" long

PLAS-TIES (800) 854-0137
www.plasties.com

FAX: (714) 972-2978
info@plasties.com