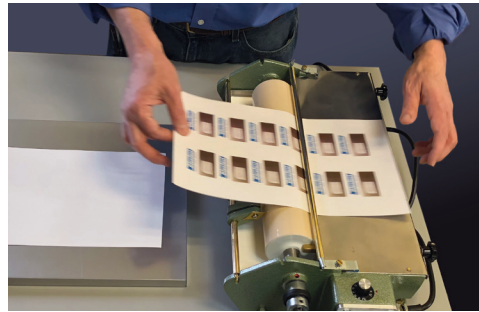
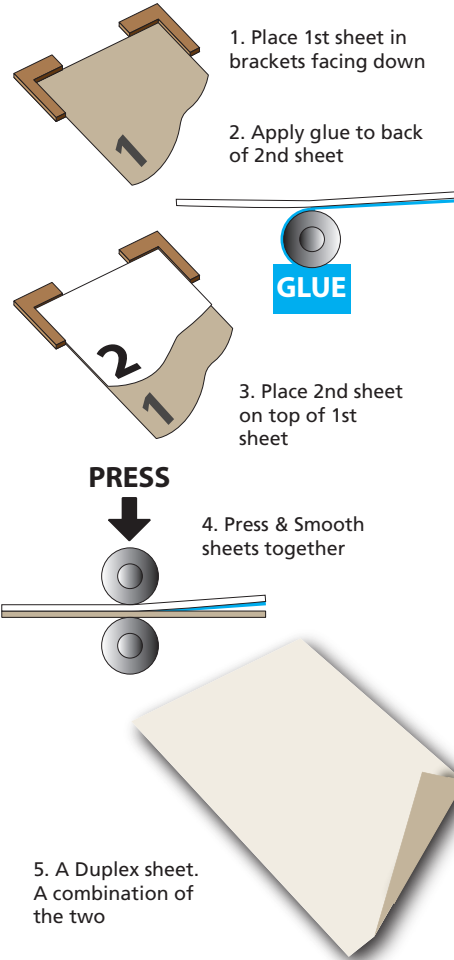


SHEET DUPLEXING FROM GLUEFAST!

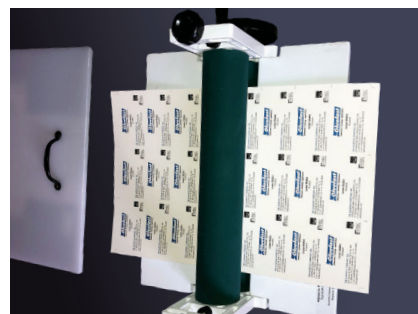


The 14" **Captain B gluer** applies adhesive onto paper up to 13" wide, any length. Suitable for most paper stock up to 14 point or 310 gr.



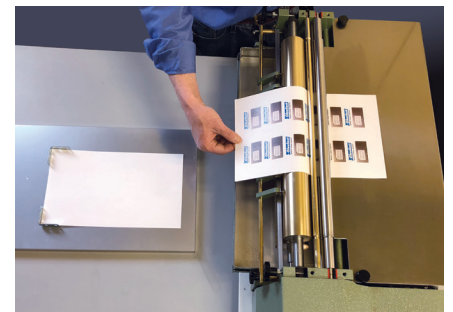
Our **GF 878P adhesive** is recommended for gluing, offering excellent lay-flat & neutral pH. After gluing the top sheet you place it on the **Alignment Board** which allows you to accurately place the glued sheet on top of the bottom sheet.

Available in 14" x 30" or 18" x 24".



The **Adjutant Press** squeezes the glued sheets together, insuring excellent contact and eliminating any air bubbles.

Available in a manual 14" roller unit (Adjutant Jr) and in powered 20", 32" & 42" roller widths. A dry paint roller can also be used to smooth glued sheets, but the Adjutant increases production.



The 20" **Colonel gluer** applies adhesive onto paper up to 19" wide, any length. Suitable for most paper stock up to 18 point or 350 gr. With optional pressure bar attachment thicker paper stock can be glued.

Available in 20", 32" & 42" roller widths.



Adjustable corner brackets with strong magnets allow for easy size changes of paper width.



After the sheets are glued together they are placed under a **weighted board** for about 30 minutes to preventing warping.

The board has two handles and is available in 18" x 24" or 24" x 36".

DUPLEXING KITS

There are two kit sizes:

BCD-14 includes:

14" x 30" Alignment Board
18" x 24" Weighted Board

BCD-24 includes:

24" x 36" Alignment Board
24" x 36" Weighted Board